

ASSISTENZA SANITARIA: LA PROSPETTIVA DELLE NUOVE NECESSITÀ E LE RELATIVE SOLUZIONI

TRANSFORMING THE HEALTH AND SOCIAL EQUITY LANDSCAPE: THE WHO HESRI REPORT

Chris Brown & Luigi Bertinato

WHO European Office for Investment for Health and Development

February 8, 2025

Sala San Domenico, Ospedale SS. Giovanni e Paolo | Venice



The World Health Organization Europe at a Glance

WHO European Region



1 of 6 regional offices around the world



Based in **Copenhagen**, Denmark



53 Member States



30 Country Offices



4 Centres of Excellence

1 Centre hosted by Italy based in Venice



Centre of Excellence in Venice, Italy

WHO European Office for Investment for Health and Development

The Venice Office

One of the 5 Centres of Excellence in the WHO European Region

Who we are

A team of health, economic, and social policy professions + 5 collaborating research centres + 2 health policy networks spanning 38 countries

What we do

Connect health, social & economic policy-makers with the solutions to reduce health inequities for inclusive and sustainable societies and economies.

- home of the WHO EURO *Healthy Prosperous Lives for All Initiative*
- evidence, analysis and Investment tools for **shifting to Well-being Economies**
- policy & strategy support to European countries
- solution dialogues
- regional and global norms and guidance
- European alliances & partnerships for health equity & wellbeing



World Health
Organization

European Region



WHO European Office for Investment for Health and Development



Ricerca e Sviluppo di Strategie tra la Sanità che collabora con altri settori per mettere la Salute e i determinanti al centro delle politiche istituzionali

Motore delle economie del benessere



Co-creatori e Partner

La salute lavora con le imprese, l'energia, l'istruzione, il lavoro e altri settori per affrontare le sfide che nessun settore può fronteggiare da solo.

Esempio

Partenariati di giustizia sanitaria: L'unione dei servizi sanitari con il supporto legale su questioni come l'alloggio e il debito può migliorare le condizioni di vita delle persone che accedono al servizio, oltre a promuovere il benessere mentale.





“


L'economia del benessere è un'economia in cui gli investimenti, le spese e le risorse pubbliche e private sono utilizzate per migliorare il benessere umano, sociale, economico e planetario, di cui tutti possono fruire.




The RHN and Italian regions

 **42** regions and associated countries

 **25** countries

 **10** partners

 **100+** million people



- **Promoting health at all ages and across sectors**

- Decarbonisation of the Health Sector (Trento)
- Trentino health plan (2015–2025)
- Environment: PFAS (Veneto)
- Collaborating on One Health (Lazio)

- **Protecting against emergencies**

- Exchanges and consultations with Italian regions during the pandemic (60 webinars since 2020, many in Italian)
- Session at annual meetings in 2021 and 2023 on enhancing emergency preparedness

- **Empowering through science, data and innovation**

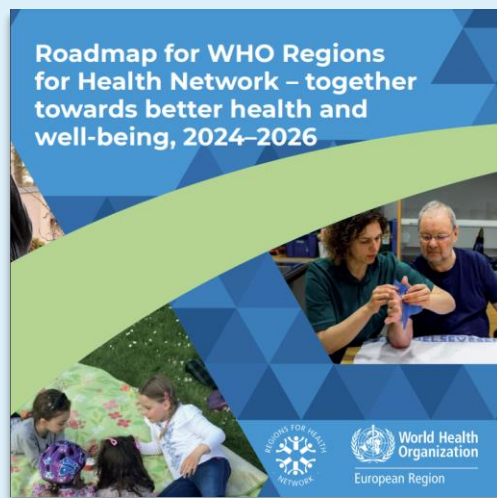
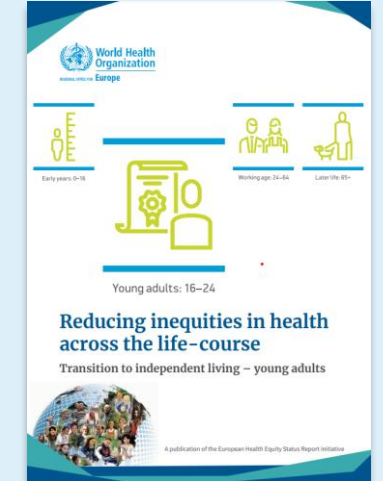
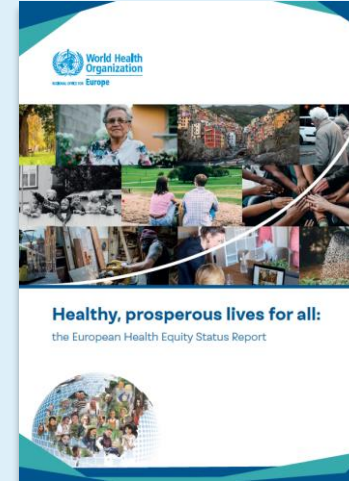
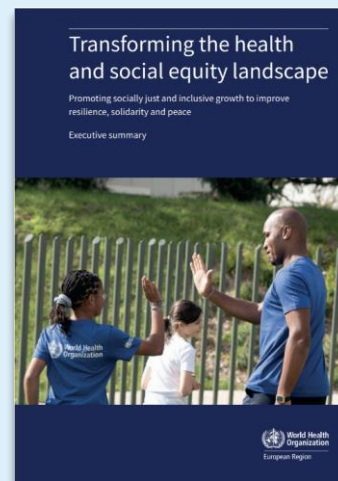
- Collaboration with EU Committee of the Regions
- Identification of innovative regional practices
- Digital health development in Italy

- **Healthy settings**

- Age-friendly environments in Friuli-Venezia Giulia
- Focus on added-value of regional reforms (Mental Health, Humanization, PHC and services integration)

L'Ufficio OMS di Venezia lavora con l'Italia

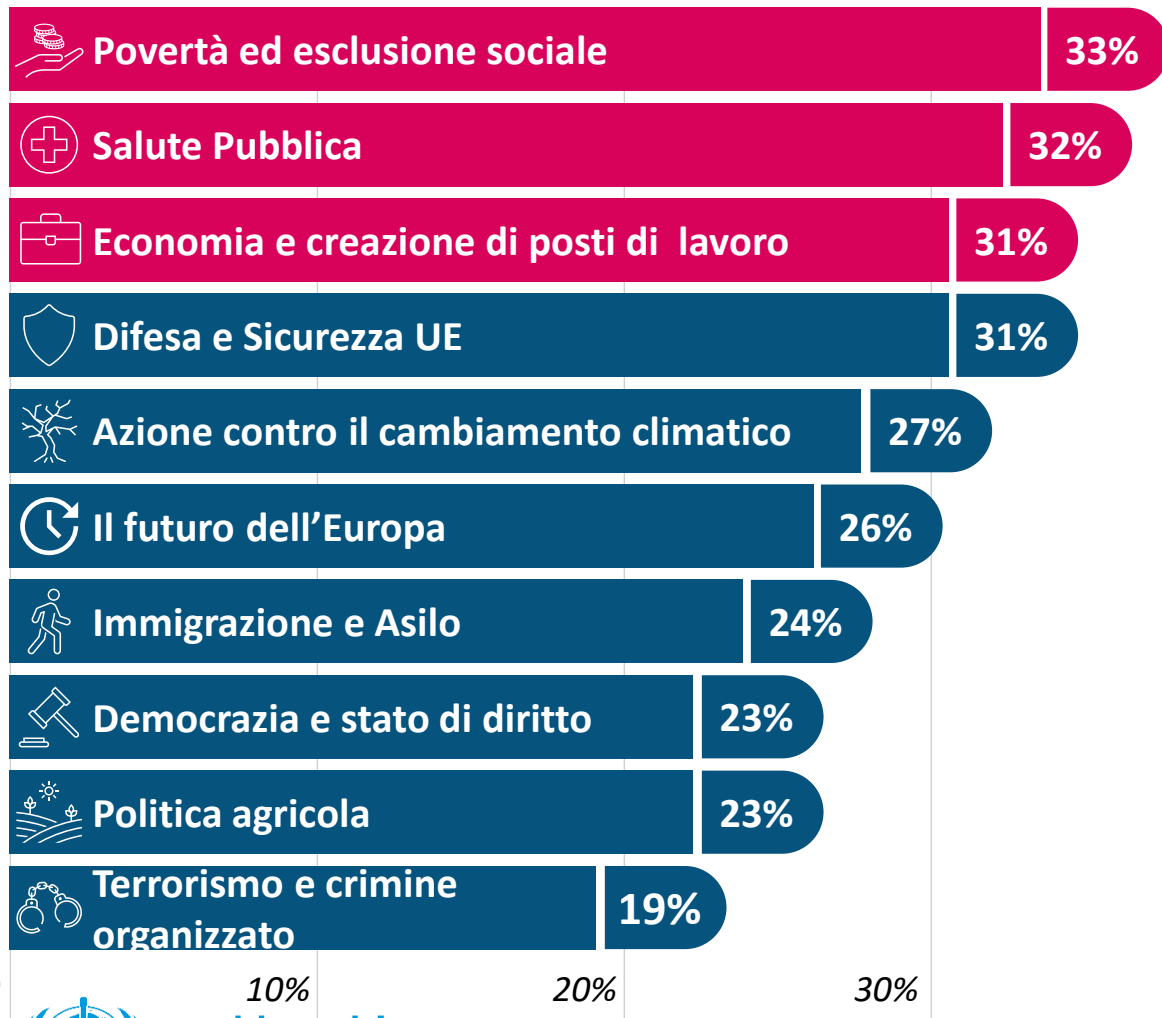
European Region



SCAN ME

Povert , lavoro e salute | Principali preoccupazioni degli italiani alle prossime elezioni europee

Le 10 questioni ad alta priorit  in tutta l'UE:



Le 3 questioni prioritarie in Italia:



Fonte: Eurobarometro Parlamento europeo 101.1

**LA PROSPETTIVA
DELLE NUOVE
NECESSIT **

LA PROSPETTIVA DELLE NUOVE NECESSITÀ

recenti evidenze della Regione Europea dell'OMS



- **Modelli di sviluppo economico che privilegiano il profitto rispetto alle persone**

64% dei giovani nell'UE con scarso benessere nel 2021 legato alla precarietà del lavoro, ai salari e alla disoccupazione



- **Distribuzione ingiusta di opportunità e risorse**

600.000 decessi in eccesso in aree a basso sviluppo umano e con scarsi investimenti nel sistema sanitario



- **Sottovalutazione dell'importanza dei servizi pubblici per salvaguardare la fiducia e la resilienza sociale e fiscale**

Il 40% in meno di fiducia nel governo tra le persone senza lavoro, che si trovano in difficoltà economiche e non possono permettersi cibo, medicinali e alloggio.

The DEMOGRAPHIC Context 1

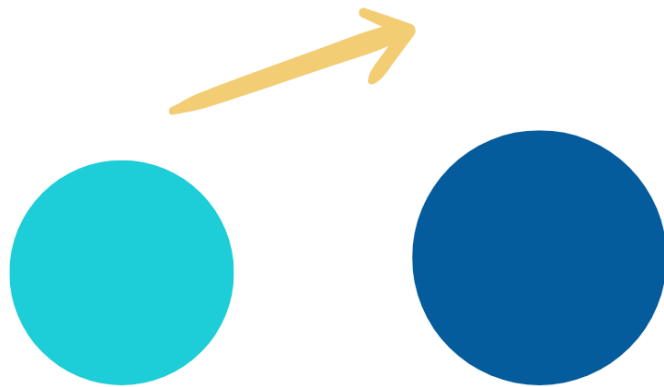
**THE NUMBER OF
PEOPLE AGED 65+ WILL
RAPIDLY RISE FROM**

206

MILLION in 2021 to

288

MILLION in 2050



**85+ POPULATION WILL
MORE THAN DOUBLE**

29

MILLION in 2021 to

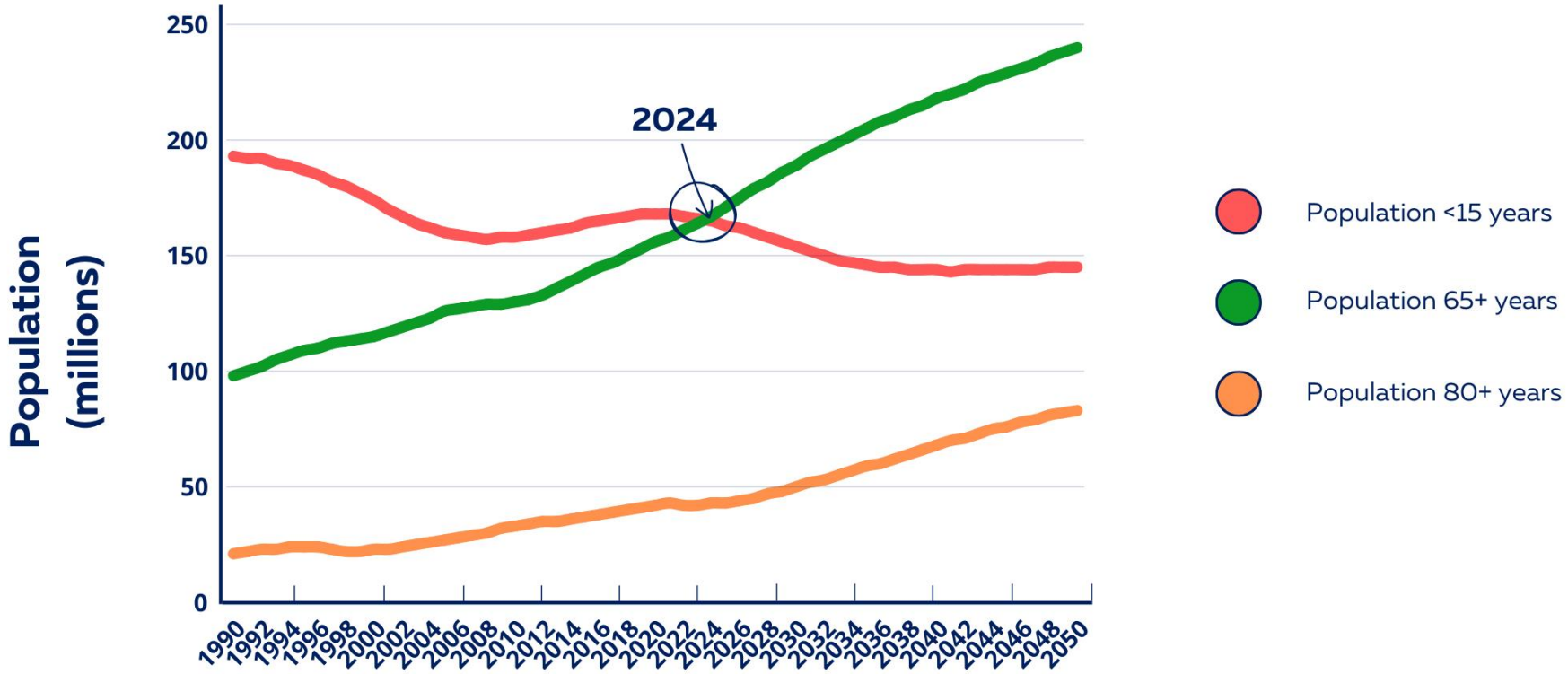
65

MILLION in 2050



Population projection by age groups 2013 to 2050 for G7 member countries including the EU-27 countries.
Source: World Population Prospects 2022 (UN DESA (2022)).

WHO European Region has more older adults than younger ones



Population by age groups from 1990 to 2050
Source: World Population Prospects 2022 (UN DESA (2022)).



Gender Disparities in Healthy Life Expectancy*

Women live 67 years | Men live 65 years

COVID-19 Reverses Gains

Healthy Life Expectancy Declined by 2 years

NCDs

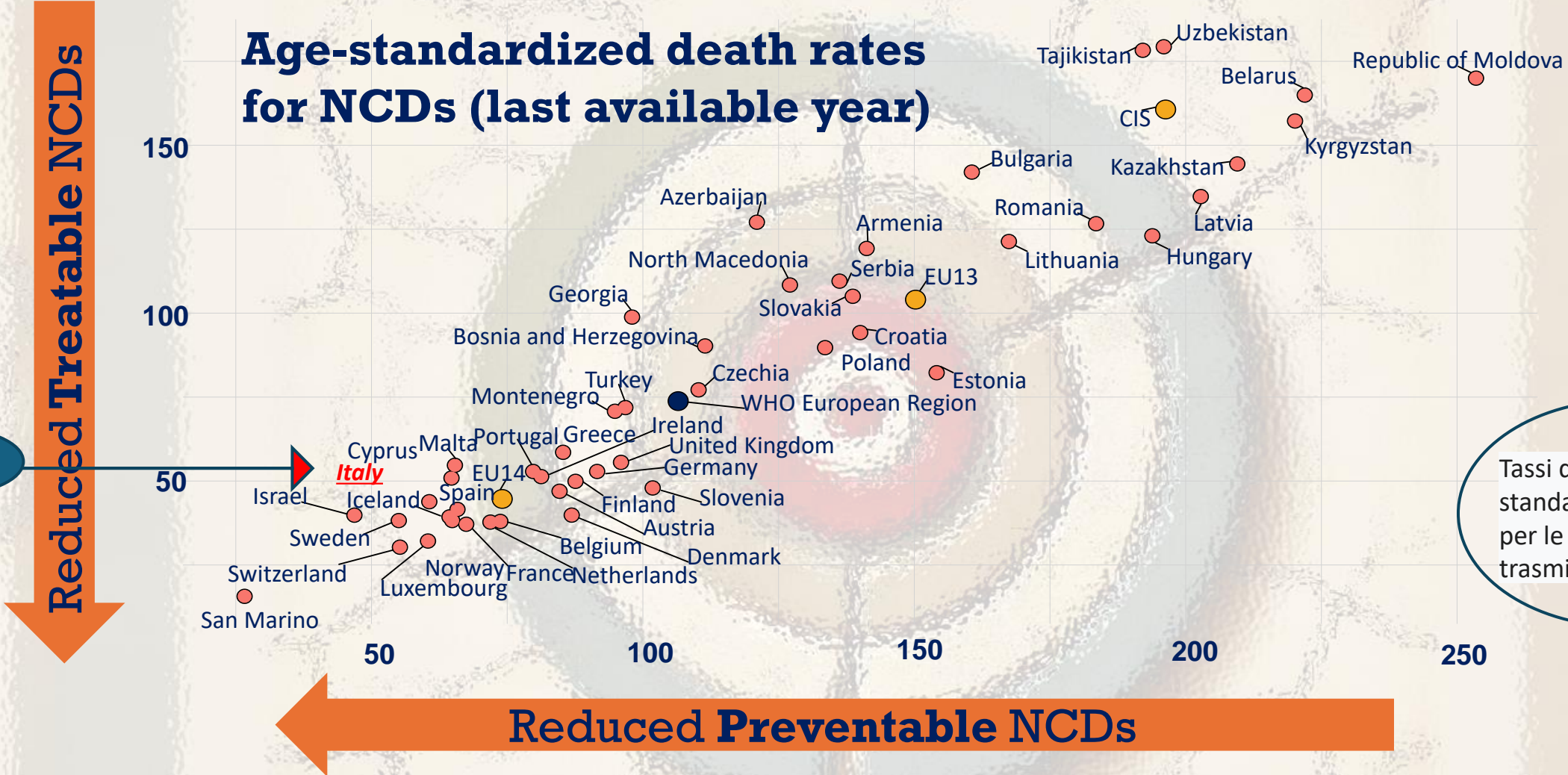
Are the leading cause of death
for 70+

1 in 7

Older persons live with a mental
health condition

NEED TO BENCHMARK THE STRATEGIES IN A CHANGING EUROPE

Age-standardized death rates for NCDs (last available year)

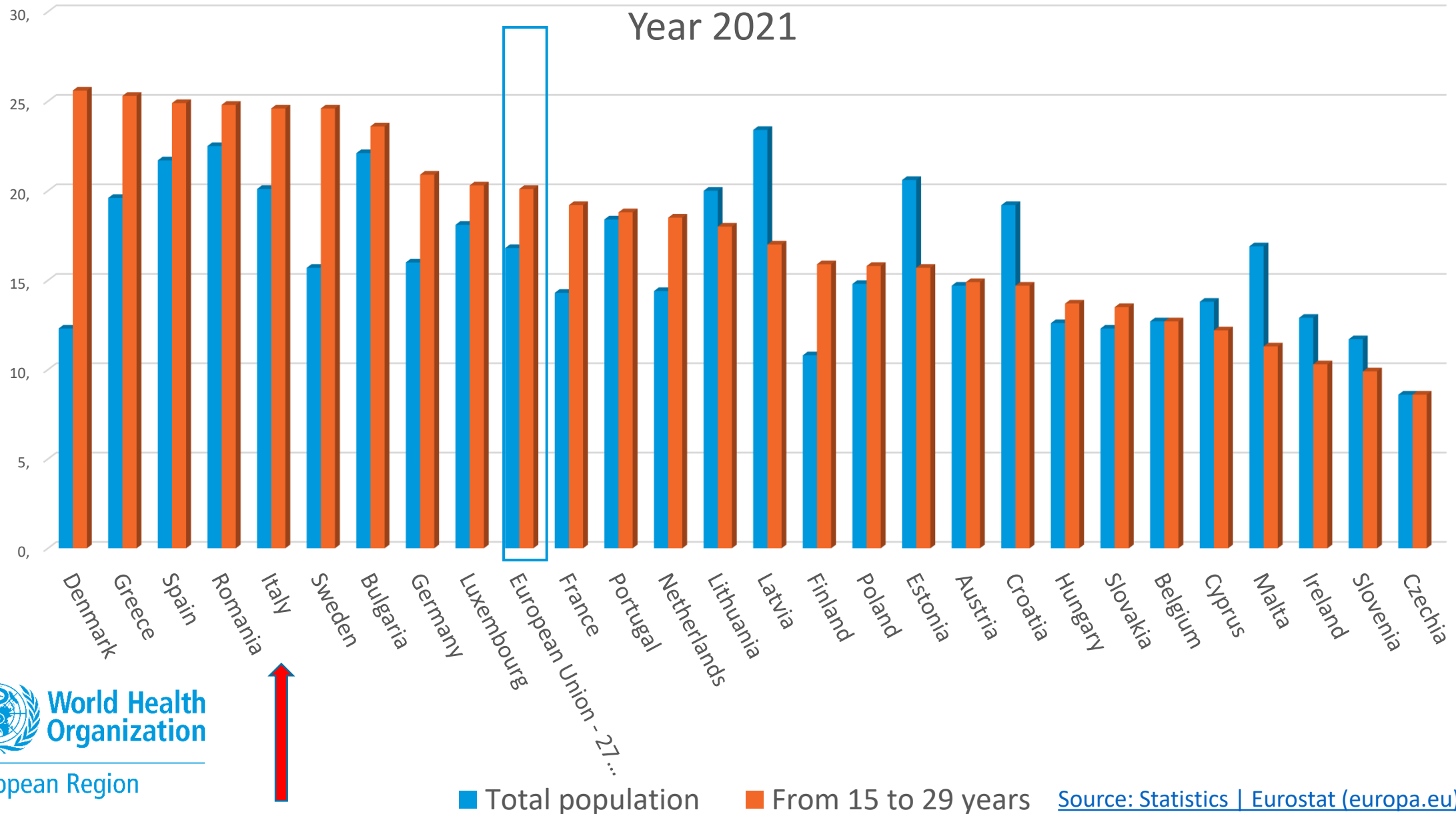


Tassi di mortalità standardizzati per età per le malattie non trasmissibili

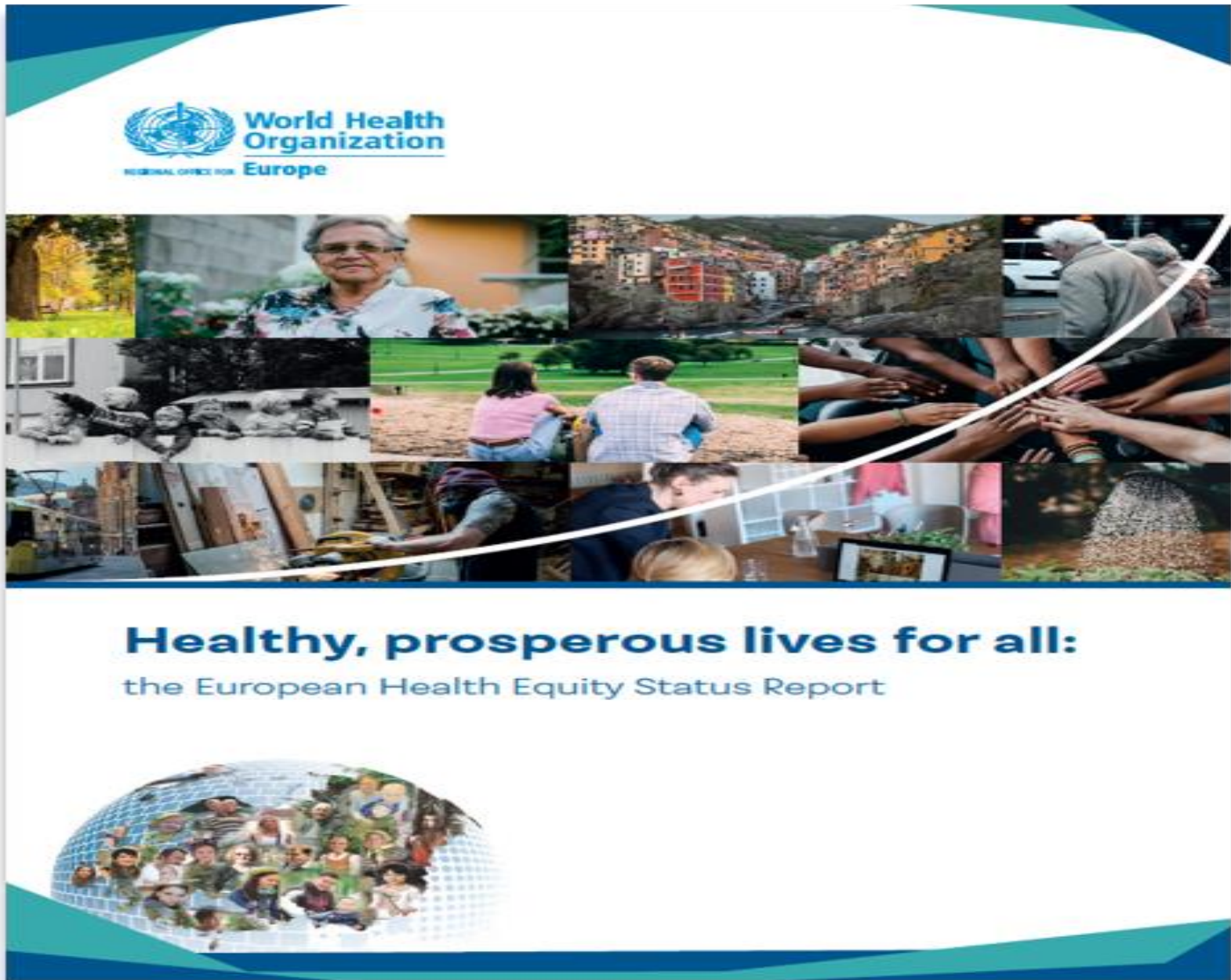
Source: WHO, Forthcoming Progress report on NCDs

At-risk-of-poverty rate by poverty threshold, age and sex

Year 2021

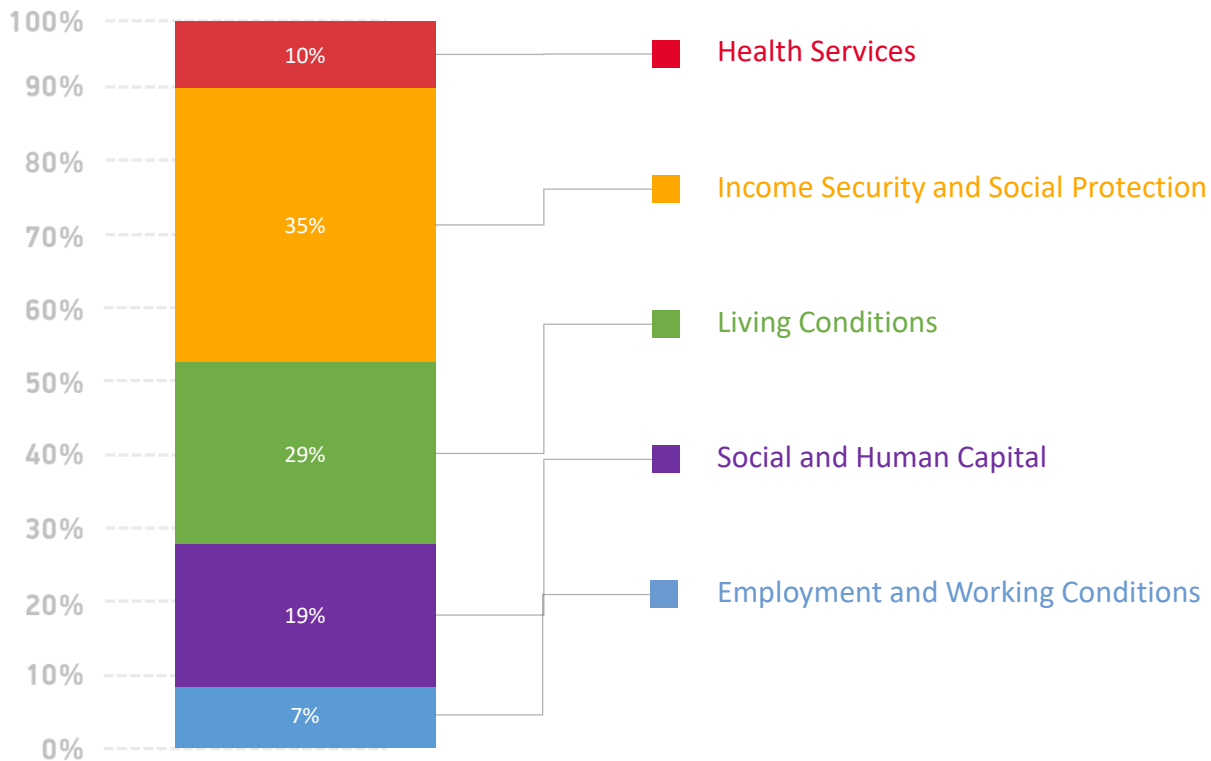


*The first **Health Equity Status Report** released by WHO Europe in 2019 synthesized innovative data and analyses to show how government and international level policy decisions had shaped progress in these areas within and across the European Region.*

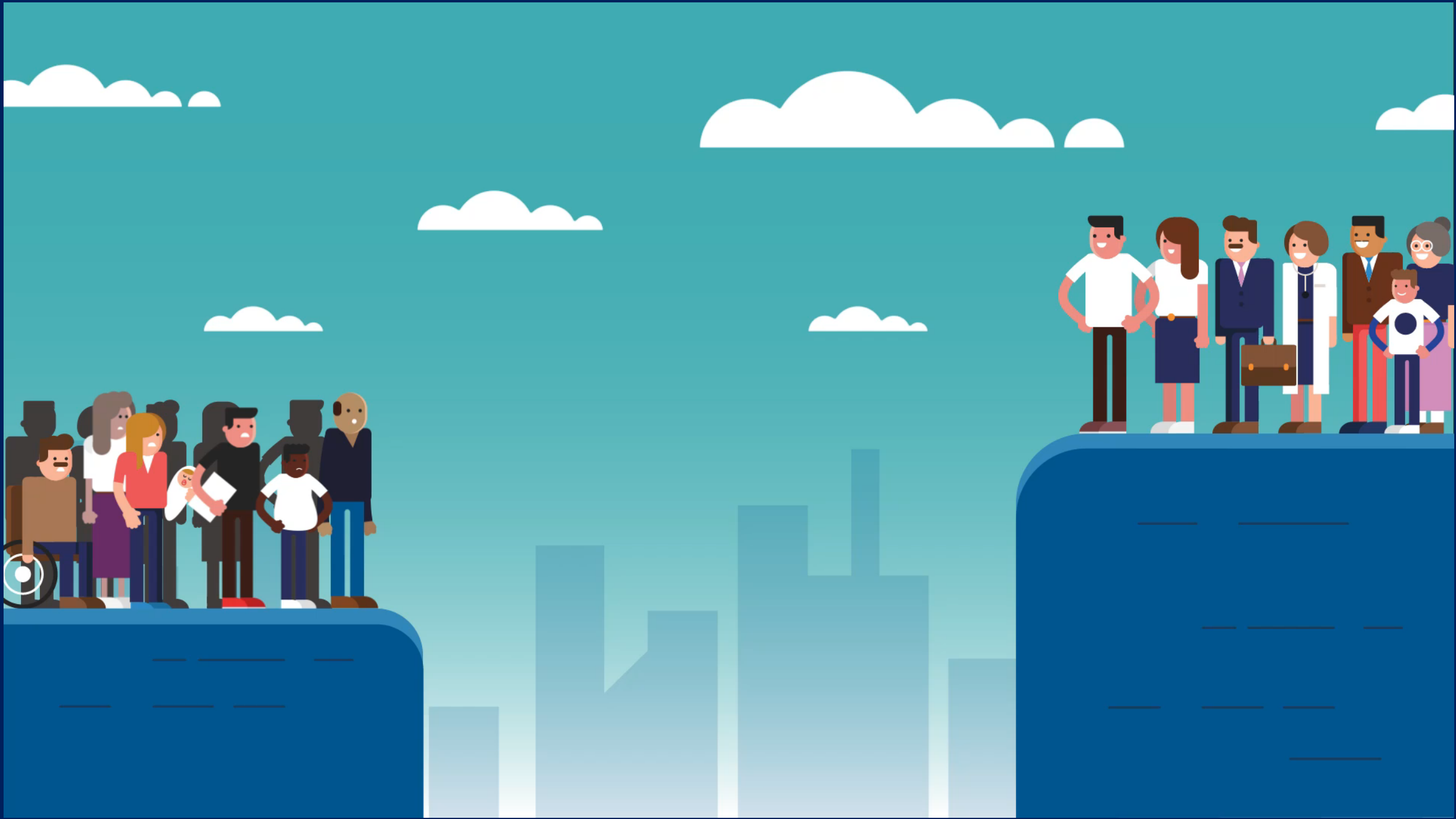




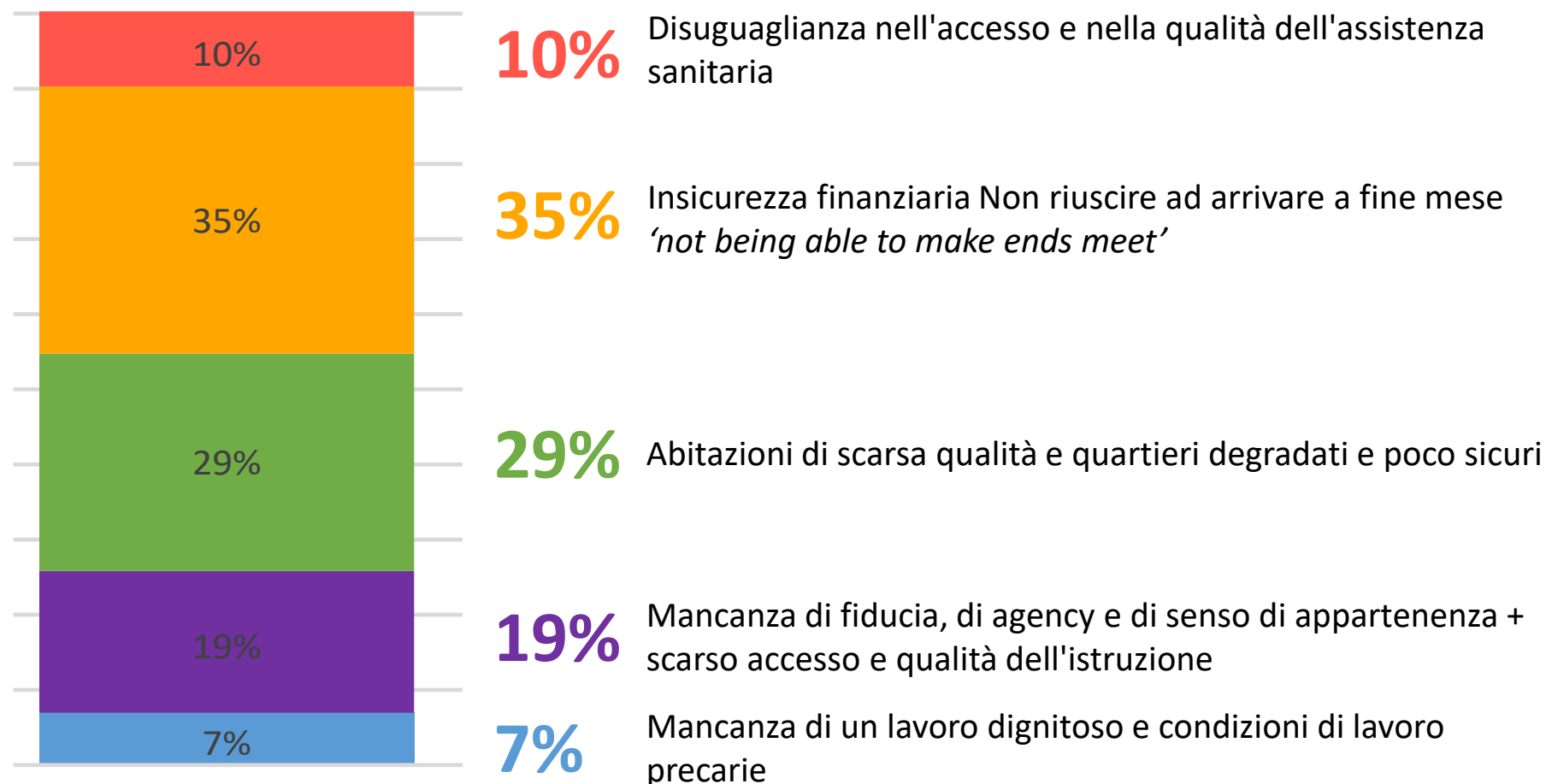
What conditions contribute to health inequities



Relative contribution to the gap in self-reported health explained by differences **in 5 essential conditions, controlling for age & sex**
(based on analysis of EQLS 2003-2016)

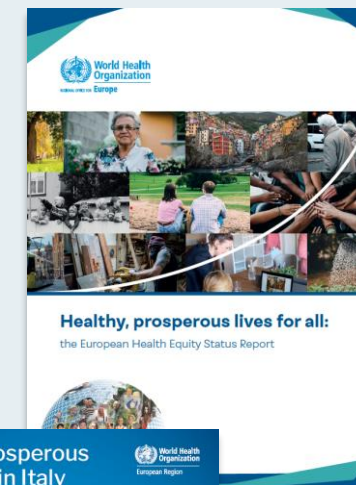


Cosa impedisce alle persone di godere di buona salute e di una vita dignitosa



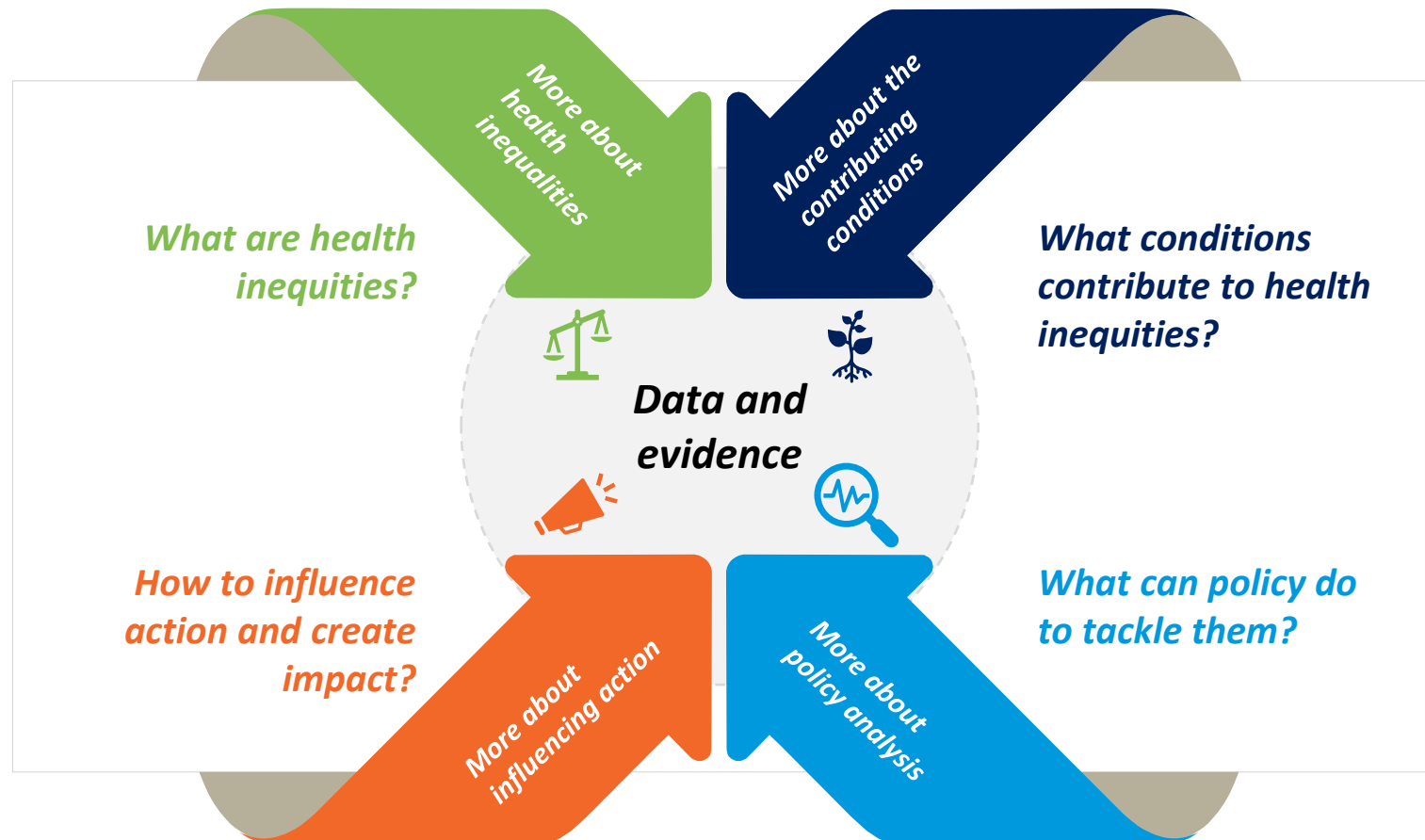
Decomposizione del divario nella salute autodichiarata tra i quintili di reddito più poveri e quelli più ricchi
Fonte: WHO European Health Equity Status Report initiative 2019

Per ulteriori dettagli:

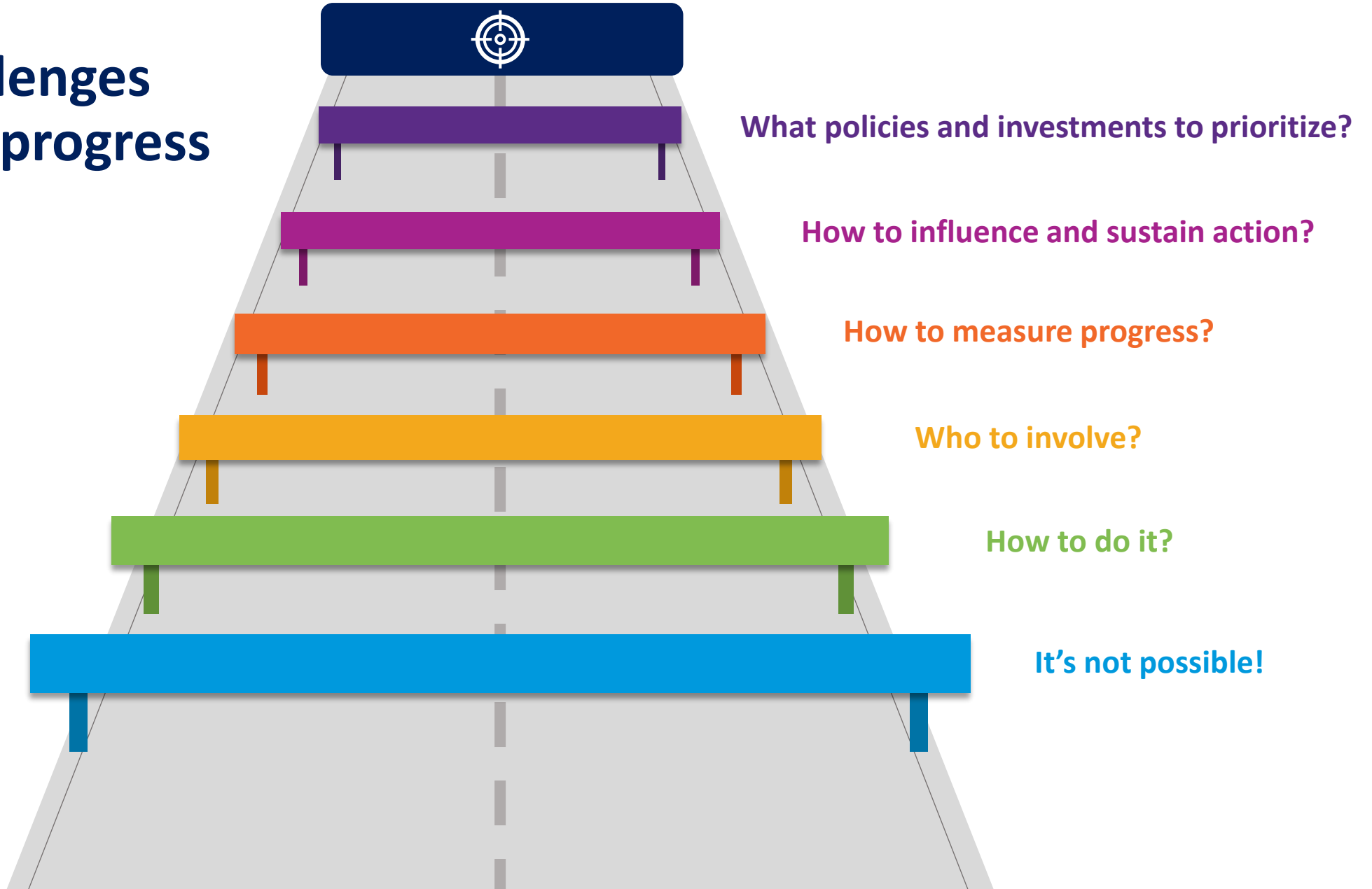


Health Equity Status Report Initiative

Key questions guiding the first report



6 key challenges hindering progress





What are health inequities



Up to 29 more low-earning women and men in every 100 report poor health

compared to every 100 high-earning men and women

Fino a 29 donne e uomini a basso reddito su 100 lamentano cattive condizioni di salute

Questi divari sociali nella salute iniziano alla nascita e continuano per tutto il corso della vita. Sono evitabili e ingiusti

These social gaps in health begin at birth and continue through the lifecycle. They are **avoidable and unjust**





What conditions contribute to health inequities



Indicators of living conditions



- Housing cost overburden
- Housing deprivation
- Fuel deprivation
- Use of safe drinking water
- Use of safe sanitation
- Tenure/property rights

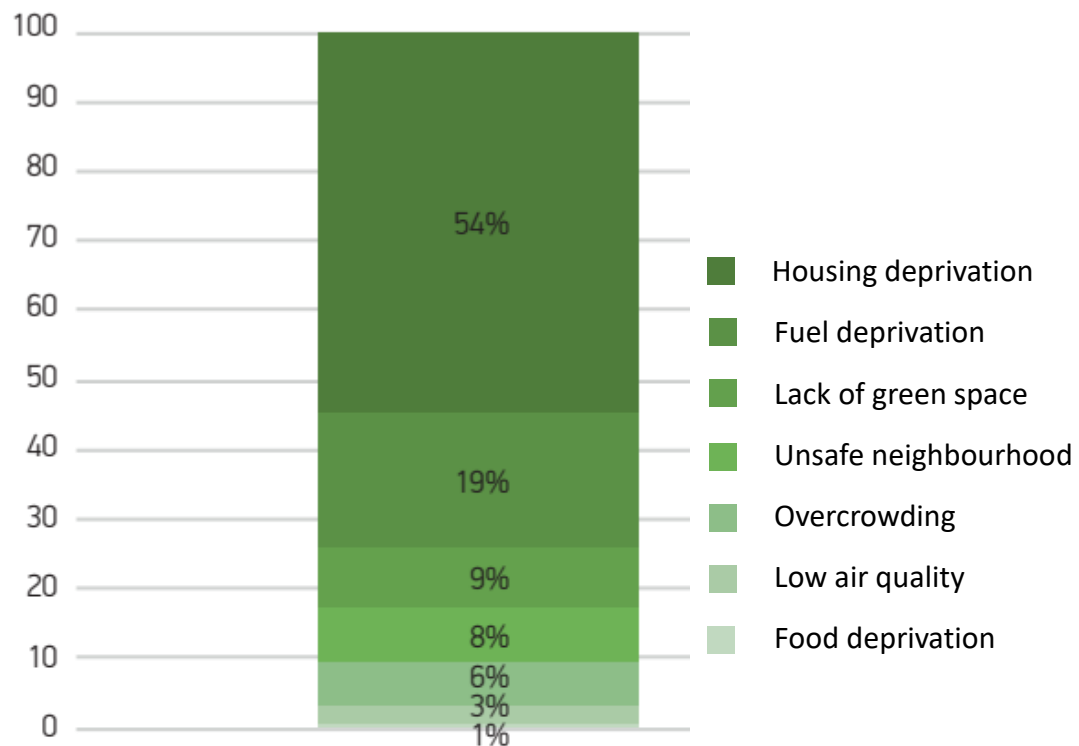


- Air quality
- Access to public transport
- Access to green space
- Neighbourhood safety
- Public spending on housing and community amenities



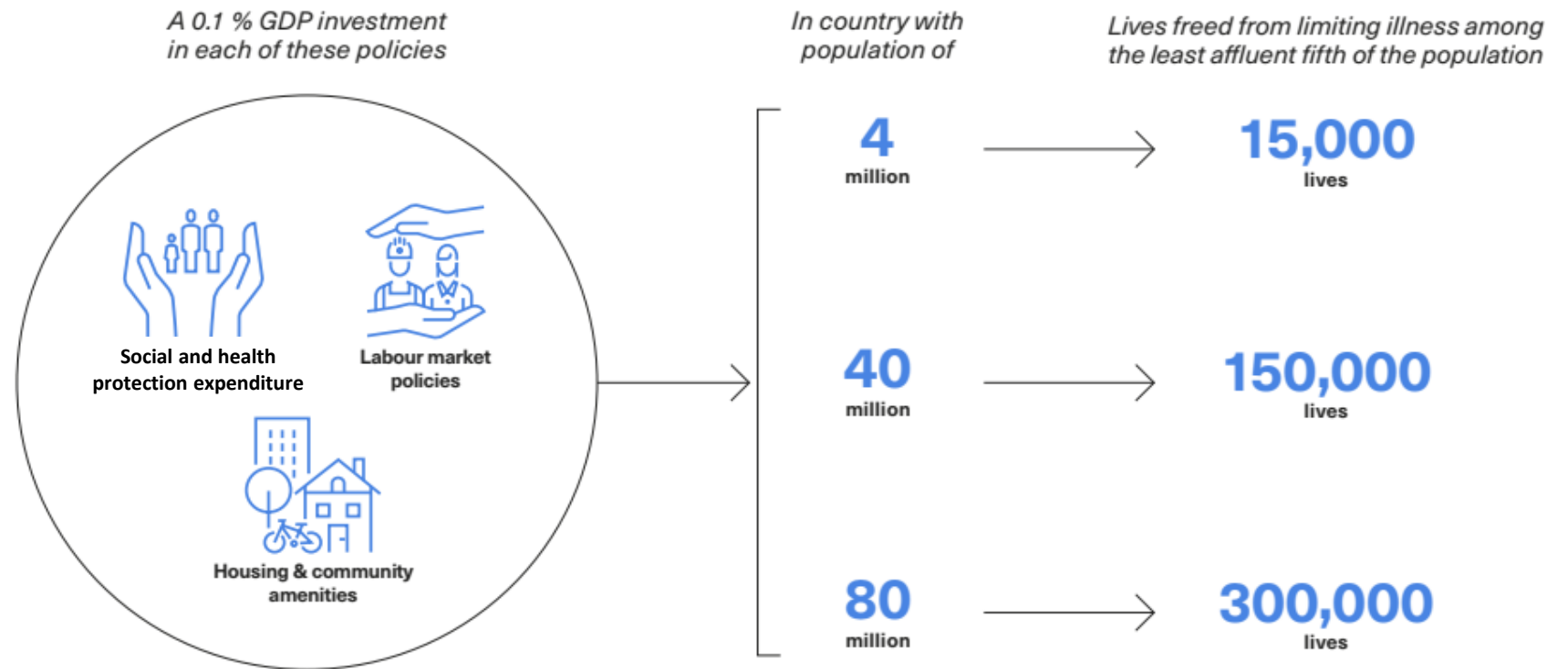
- Tax on tobacco
- Tax on alcohol
- Food insecurity

Living conditions that contribute to health inequities



Health equity results can be achieved in four years!

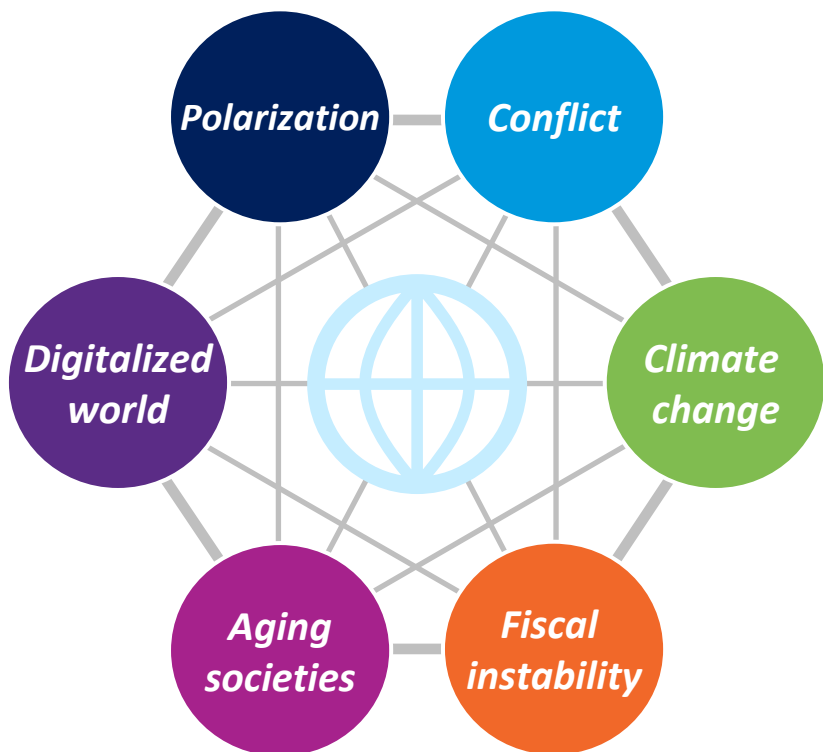
.....e LE RELATIVE SOLUZIONI!



Source: WHO European Office for Investment for Health & Development, (WHO Venice Office) 2019

The new 2025 HESRi study

Over the last 5 years, the European region has experienced unprecedented shocks, including the COVID-19 pandemic. Today, policymaker and the public alike are seeking to secure a better life and security amidst new and ongoing challenges:



The 2nd WHO European Health Equity Status Report will:

- 1** Signpost concrete solutions
- 2** Model how different investments in equity transformative policies and approaches not only improve lives and wellbeing, but contribute to producing trusting, prosperous and sustainable public systems, societies and economies.



The 2nd Report will be launched in Europe in October 2025 and discussed at the United Nations Social Summit in Nov. 2025.



The work will bring together 15 global scientific health equity experts and senior policy leads from ministries of health from 12 European countries who are championing health equity

Themes of the report

Aging equally well in an aging society



Conflict

Polarization

Climate change

Digitalizing world

Fiscal instability

Aging societies

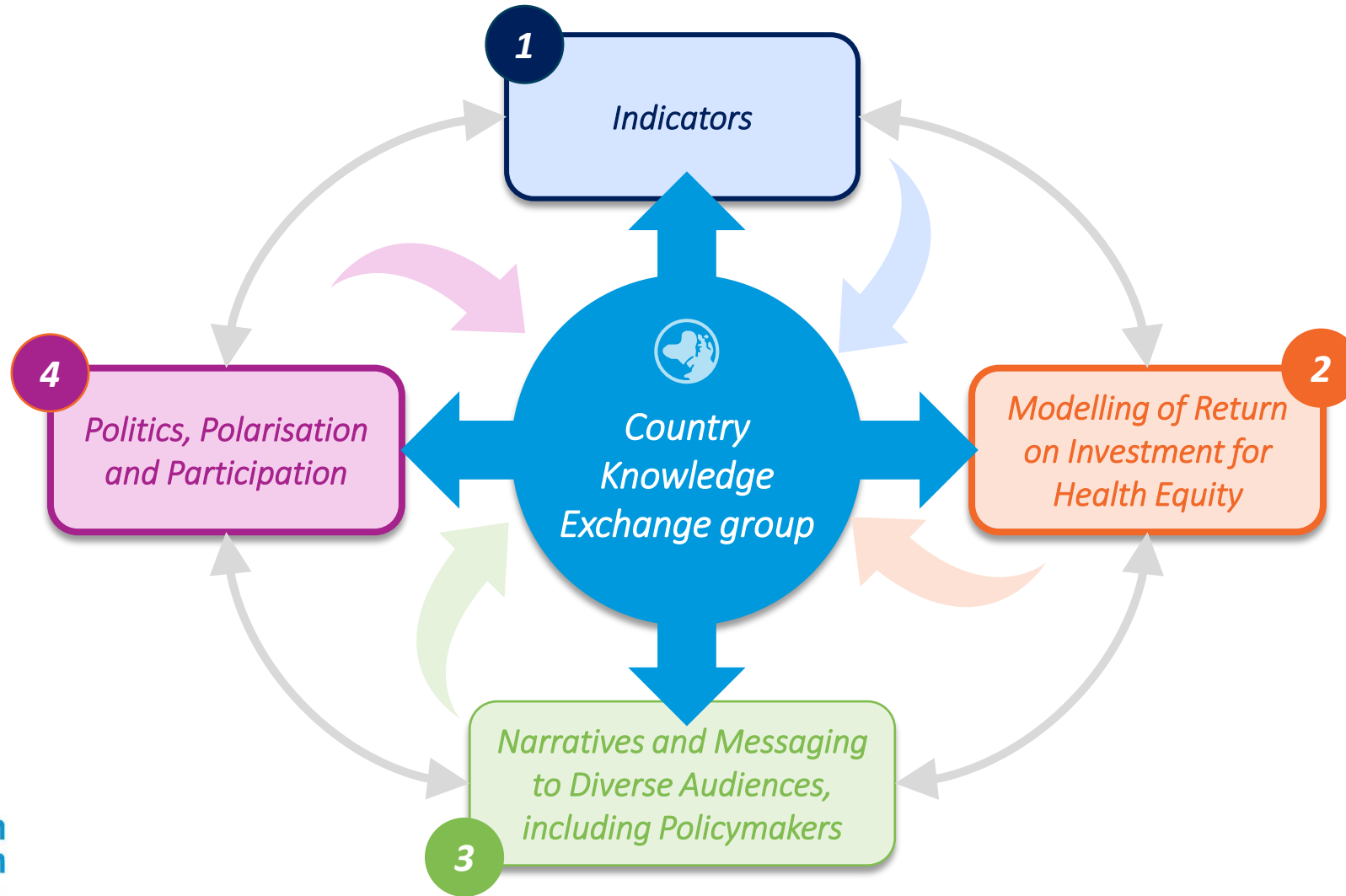


Social and economic cohesion of left behind places

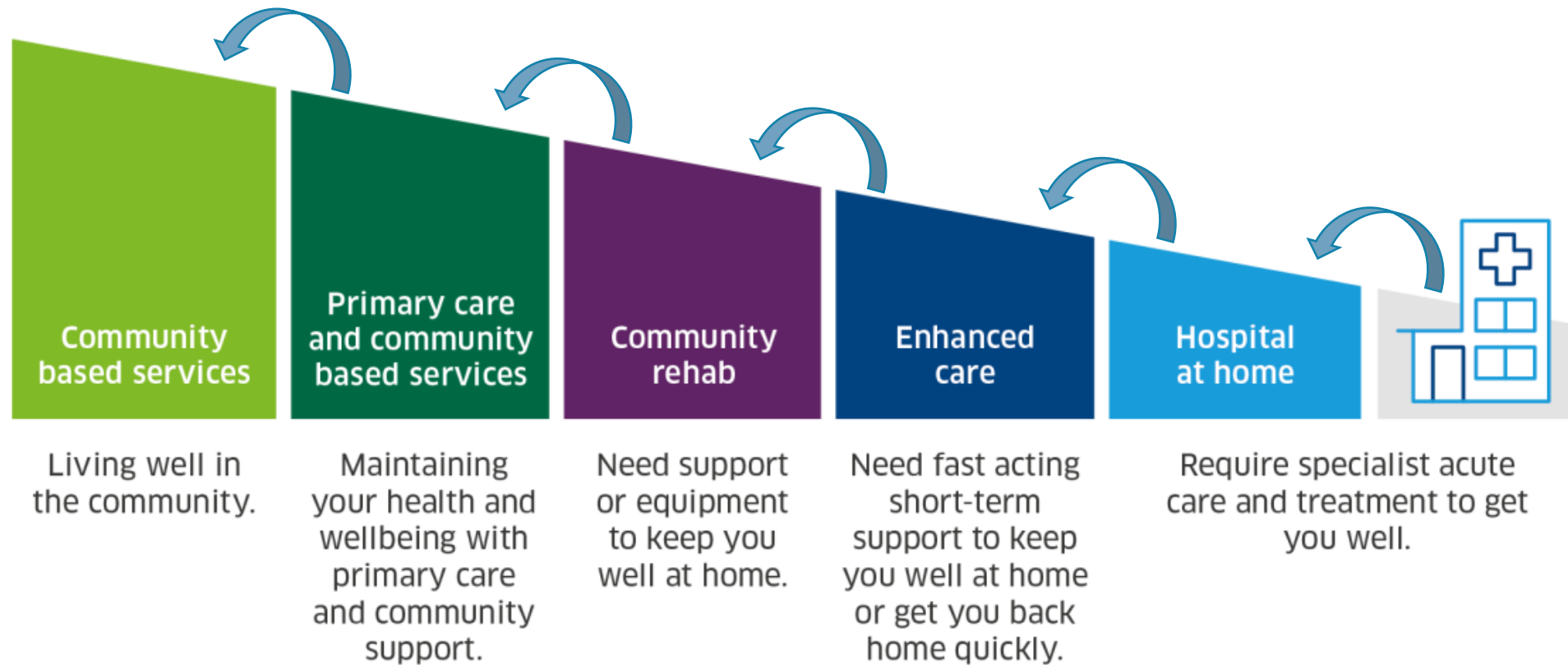


Supercharging the well-being of all young people

Governance | Working Groups



Assistenza sociale e sanitaria integrata: **più vicina alle persone nella comunità (DM 77)**



Reducing inequities has **strong public support!**



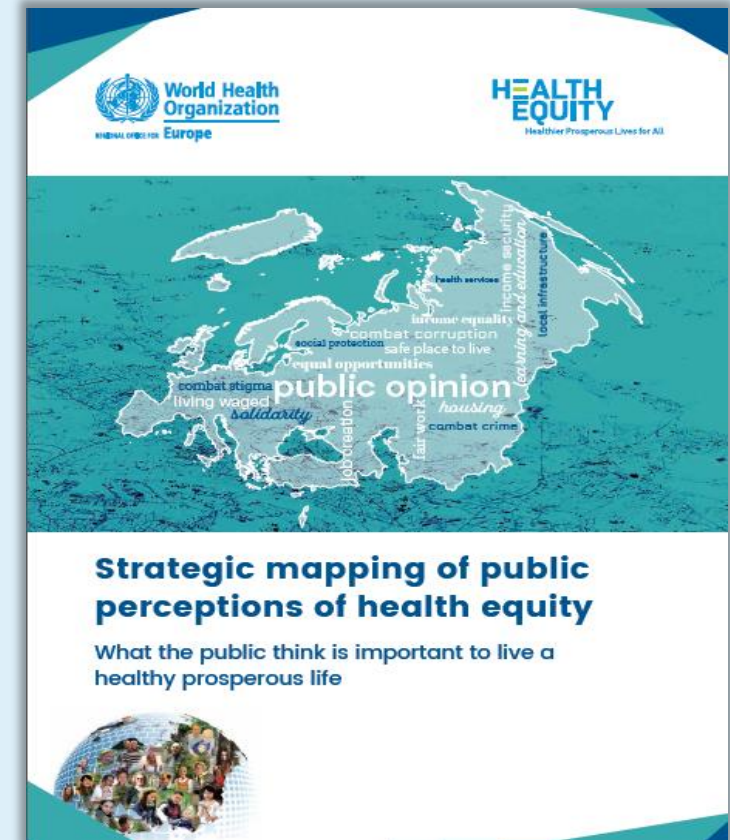
Opinion polls show having **good health is a top factor for getting ahead in life**



The public are **concerned about growing inequities**

84%

84% of Europeans believe that reducing inequities should be top of their government's agenda





Looking ahead to the new European Programme of Work

"Solidarity, equity and participation are fundamental to achieving resilient and sustainable health systems economies of wellbeing and above all in leaving no one behind"

Solidarietà, equità e partecipazione sono fondamentali per realizzare sistemi sanitari resilienti e sostenibili, economie di benessere e soprattutto per non lasciare indietro nessuno"

*Dr Hans Henri P. Kluge,
Regional Director, WHO Europe*

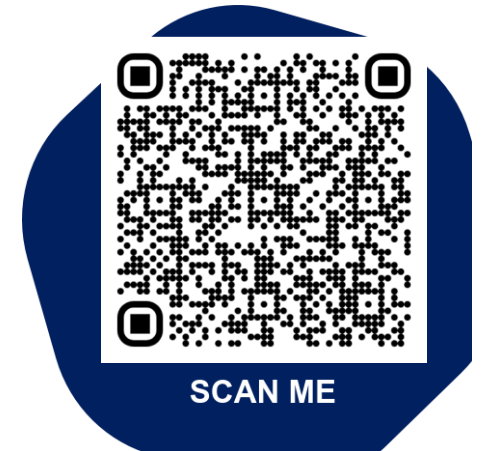
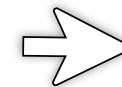


The 2nd WHO European Health Equity Status report will be a tool to implement the commitment to equity in the upcoming EPW

Thank you for your kind attention!



WHO European Office for Investment for Health and Development
Find out more about what we do and download Resources.



Il settore sanitario come investimento

Spesso si ha l'errata percezione che gli investimenti nella sanità siano **un costo per l'economia, piuttosto che un investimento che produce benefici economici e sociali più ampi:**

Opportunità

Nel 2020, l'assistenza sanitaria e sociale ha rappresentato in media il **10% dell'occupazione totale** nella Regione europea dell'OMS.



- *Le politiche di impiego nel settore sanitario sono fondamentali per l'equità e per ottenere benefici più ampi (ad esempio, la sicurezza del reddito).*

Il settore sanitario contribuisce all'intera economia::



- *è uno dei settori più stabili durante le recessioni economiche*
- *Il moltiplicatore dell'occupazione del settore sanitario è superiore alla media di tutti i settori economici.*

Il settore sanitario promuove l'inclusione sociale e obiettivi di sviluppo più ampi, ad esempio attraverso:



- *iniziative di apprendimento continuo, formazione e istruzione*
- *gestione degli appalti in rispetto dell'ambiente e socialmente inclusiva*

Effetto moltiplicatore:



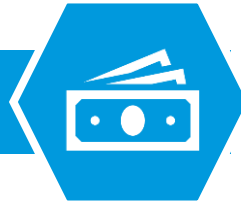
A Preston, in Inghilterra, il Consiglio Comunale ha aumentato gli appalti locali del 13% in 4 anni, traducendosi in 4 milioni di sterline in più spesi nella comunità locale



Strumenti dell'economia del benessere

Due modi per allocare le risorse verso la salute e il benessere

Generare nuove entrate



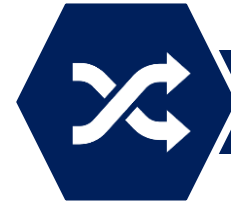
Tasse

Tasse di solidarietà (ad esempio, le imposte sul reddito), tasse sulla salute, tasse sul patrimonio, tasse sulle società



Strumenti fiscali

Scambio di debiti, bond sociali



Modellare e adattare la spesa nuova ed esistente

Bilanci del benessere

Schede di valutazione del benessere/qualità della vita, bilancio di genere



Strumenti legali, quadri di responsabilità politica e sociale

Gruppi interpartitici, commissioni, alleanze locali



Valutazione dell'impatto distributivo e della sostenibilità

Includere l'equità nella salute nella valutazione d'impatto



Applicando:

Modelli di politiche e servizi partecipativi e dialogo

Definizione di obiettivi congiunti, coinvolgimento della comunità e condivisione delle risorse



Quadri di indicatori di benessere

Reso pubblico, collegato agli strumenti fiscali e alla politica di sviluppo



Transforming health and care systems

- Strengthen Primary Care
- Ensure high-quality care, integrated health and social care support across all settings
- Build systems that value the dignity, right, safety of every person



SCAN ME